

Call: +91 86200 86200
www.abbeyhomes.in

PBRERA-SAS81-PR0863
www.rera.punjab.gov.in

अतुल्यम् - The Bliss

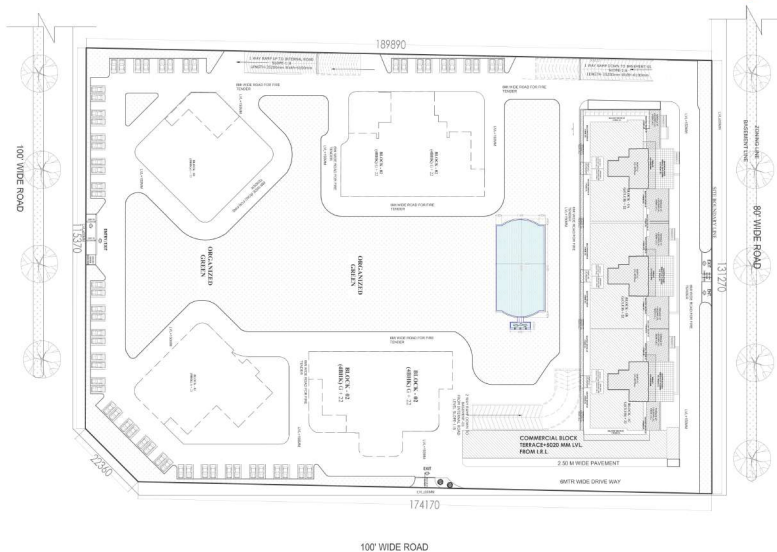
SPACES OF DISTINCTION

अनुराग - The Bliss



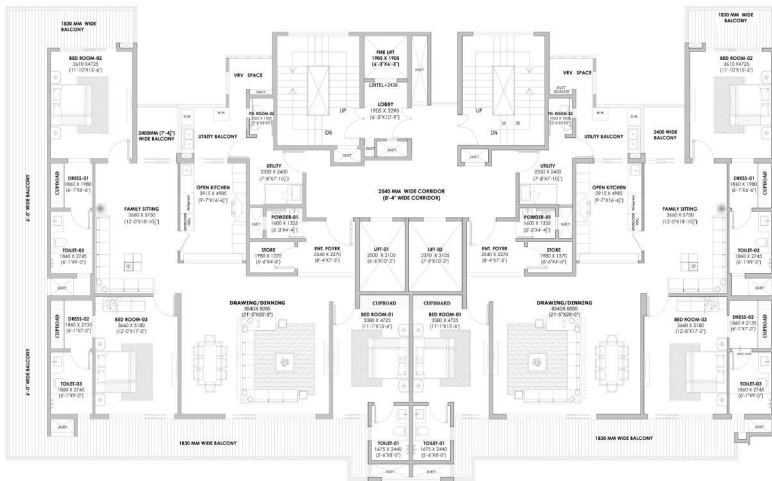
अनुराग - The Bliss



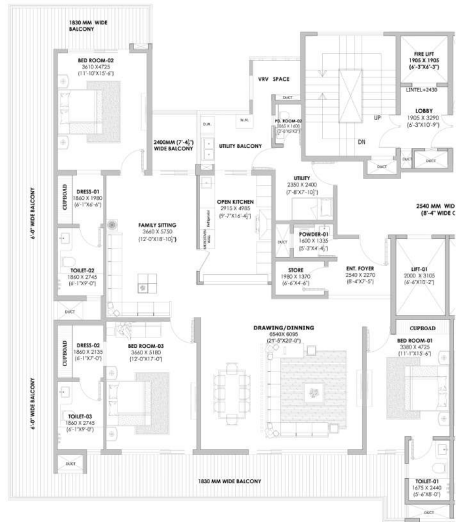


Cluster Plan

अनुराग - The Bliss



अतुल्यम् - The Bliss



अतुल्यम् - The Bliss

TECHNICAL SPECIFICATIONS



LIVING | FAMILY LOUNGE | CORRIDOR | DINING ROOM

Floor - Premium imported marble - Versace grey / Ice berg / Bulberry beige / Aristo brown / bottle black spider or other equivalent premium stone .
Walls - Finished with premium plastic emulsion paint of appropriate colour
Ceiling - False Ceiling as per design with concealed LED lights in ceiling & coves

MASTER BED ROOM & BED ROOM -1

Floor - Premium quality of Engineered Wood or equivalent
Walls - Finished with premium plastic emulsion paint of appropriate colour
Ceiling - False Ceiling as per design with concealed LED lights in ceiling & coves

BED ROOM- 2& GUEST ROOM

Floor - Premium quality of Engineered Wood or equivalent
Walls - Finished with premium plastic emulsion paint of appropriate colour
Ceiling - False Ceiling as per design with concealed LED lights in ceiling & coves

WOOD WORK / WARDROBES

Stylish pre-laminated modular wardrobe with highest standard hardware of Blum ,Hettich or equivalent

TECHNICAL SPECIFICATIONS



TOILETS

Floor - Imported marble or equivalent

Walls - Designer ceramic tiles / Imported marble or equivalent

Ceiling - Premium quality acrylic emulsion paint on false ceiling

Counter Top - Imported stone / Engineered Stone or equivalent

Sanitary Ware & CP Fittings - Designer sanitary fixtures of Artize/ equivalent

BALCONIES & DECK

Floor - Anti Skid ceramic tiles

Walls - Appropriate finish of exterior grade texture paint

Railing - Glass railing as per design

BRANDED MODULAR KITCHEN

Floor - Premium imported marble - Versace grey / Ice berg / Bulberry beige / Aristo brown / bottle black spider or other equivalent premium stone .

Walls & Dado - Stain resistant engineered stone of an appropriate height & finished with premium plastic emulsion of appropriate colour

Ceiling - False Ceiling as per design with concealed LED lights in ceiling & coves

Hardware - Blum / Hettich or equivalent Sink - SS powder coated finish

Flick Mixer - Chrome / powder coated | Drawers & Cabinets - Soft closing bank

Counter Top - Exclusive stain resistant engineered stone or equivalent

Miscellaneous - Chimney , Hob , Microwave , OTG of approved brands like Bosch / Siemens or equivalent, Refrigerator 600 Ltrs Plus , Dishwasher make Bosch / Sharp / Samsung or equivalent

TECHNICAL SPECIFICATIONS



SERVANT ROOM

Floor -Premium vitrified tiles

Walls - Finished with premium plastic emulsion paint of appropriate color

Servant Room Sanitary Ware & CP Fittings - Jaquar / TOTO or Kohler or equivalents

APARTMENT SERVICES

Centralized Heat Pumps - Heat pump of Jaquar / Artize make provided in each unit for hot water supply to toilets & kitchen

HVAC - VRV / VRF Ac system of Mitsubishi or equivalent in living room, dining, family room & bedrooms & kitchen. HVAC - VRV / VRF Ac system of Mitsubishi or equivalent on individual floors lift lobbys & servant room

Air Purifier -Treated fresh air unit in all units

Electrical - All electrical wires in concealed conduits, provision for adequate light & power points. Telephone / TV outlets in living, dining and bedrooms, moulded modular plastic switches and protective MCBs with automation as per design

Plumbing - As per standard practice all internal plumbing in CPVC / Composite. All external in UPVC

TRIPPLE HEIGHT APARTMENT LOBBIES

Floor - Imported marble flooring or equivalent

Walls - Combination of imported marble cladding or equivalent finished with premium plastic emulsion paint of appropriate color

Ceiling - False Ceiling as per design with concealed LED lights in ceiling & coves

Elevators- High speed elevators to be provided for access to all floors with separate service lift of Thyssenkrupp / Kone / Mitsubishi / Otis or equivalent

TECHNICAL SPECIFICATIONS



APARTMENT LOBBIES

Floor - Imported marble flooring or equivalent

Walls - Combination of imported marble cladding or equivalent finished with premium plastic emulsion paint of appropriate colour

Ceiling - False Ceiling as per design with concealed LED lights in ceiling & coves

Elevators- High speed elevators to be provided for access to all floors with separate service lift

SERVICES - AMENITIES

Generators - Will be provided for 100% back-up in emergency & safety facilities, elevators and common areas with suitable diversity

Structure - Earth Quake resistant RCC structure with MIVAN technology from South Korea

Security & FTTH - Provision for optical fibre network, video surveillance system, perimeter security, entrance lobby security with CC TV cameras, fire prevention, suppression, detection and alarm system as per fire alarm norms

Exterior - Appropriate finish of exterior grade texture paint.

Fire Fighting System - A synchronised fire fighting system with fire sprinklers, hydrant hose reel, smoke detector, heat detection & fire curtain system as per IGBC norms

STAIRCASE & LANDING

Floor - Imported marble / Granite

Railing - MS (Mild Steel) / SS (Stainless Steel) / Glass as per design & specifications

TECHNICAL SPECIFICATIONS



COMMON AREAS SPECS

Floor - Imported marble flooring or equivalent

Walls - Combination of imported marble cladding or equivalent finished with premium plastic emulsion paint of appropriate colour

Ceiling - False Ceiling as per design with concealed LED lights in ceiling & coves

AVANCER INFRASOLUTION LLP

Corporate Office: C-1/9, Sector 31
Noida Gautam Budh Nagar U.P. - 201301

Project Site: Plot No. GH-3A
Sector-88, Mohali, Punjab - 160055

Call: **+91 86200 86200** | www.abbeyhomes.in